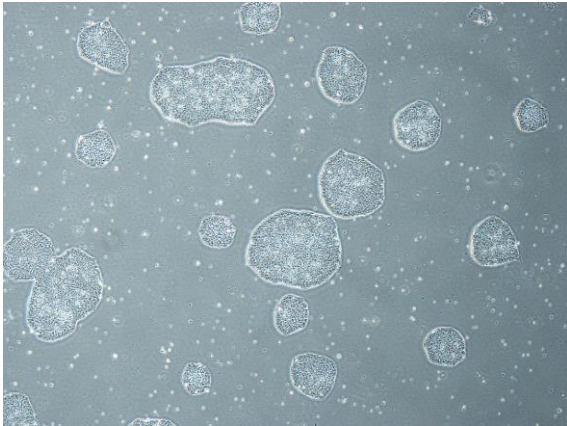
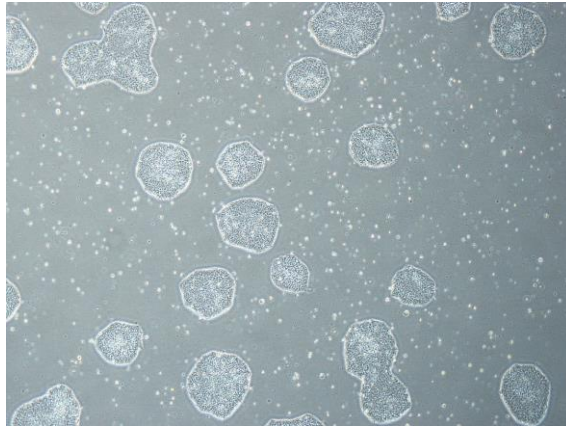


【 CiRA-j-1347 】 Morphology of iPSC colonies

CiRA-j-1347-A: passage-3



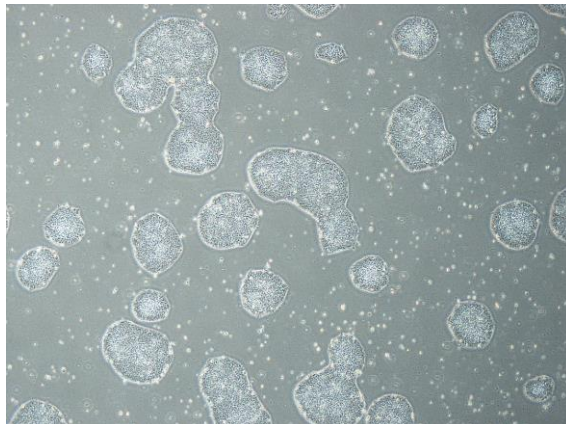
CiRA-j-1347-B: passage-3



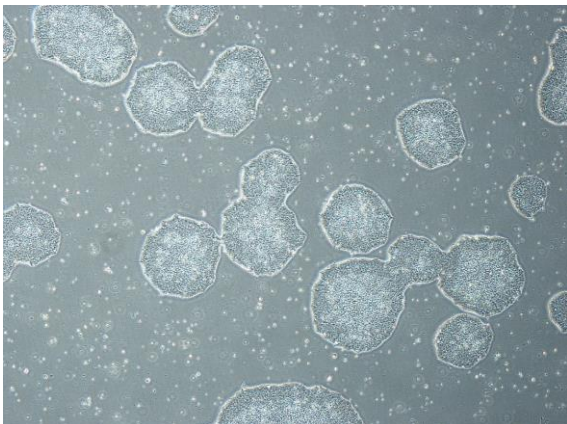
CiRA-j-1347-C: passage-3



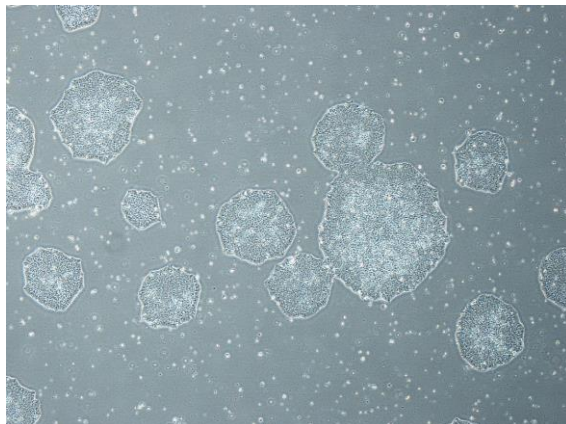
CiRA-j-1347-D: passage-3



CiRA-j-1347-E: passage-3



CiRA-j-1347-F: passage-3



(All images were captured at 4x magnification)